

**EASTERN PROVINCE
VETERAN CAR CLUB
PORT ELIZABETH**



NEWSLETTER

Affiliated to the
Southern African Veteran and
Vintage Association



MAY 2021 & JUNE 2021

Office Bearers /Portfolio Holders 2020 -2021 Committee Members		CLUBHOUSE – PHYSICAL ADDRESS:
Llewellyn Faifer CHAIRMAN SAVVA DELEGATE CLUBHOUSE RENTAL Riaan Hanekom VICE CHAIRMAN EVENTS & SOCIAL Rodney Idris SECRETARY Wiehan van Onselen TREASURER Francoise van Jaarsveld MEMBERSHIP Liezl van Onselen EVENTS & SOCIAL ASSISTANT Roché Hurter CLUBHOUSE & GROUNDS <u>Co-Opted.</u> Garth Todd WEBSITE Sue Todd NEWSLETTER Llewellyn Faifer DATING Michael Nell SAVVA DELEGATE (ALT) EVENTS / MISC EMAIL NOTIFICATIONS Devlin Faifer BARMAN		Conyngham Street Glendinningvale Port Elizabeth POSTAL ADDRESS: ** NEW** P O Box 27324 Greenacres 6057 <u>Regular Monthly Club Events</u> AS PER LEVEL 4 LOCKDOWN REGULATIONS THE CLUB IS CLOSED UNTIL FURTHER NOTICE - Delicious Takeaways are still available every Friday on a pre- order basis only from Chef Anel of ROOTED. Menus will be sent out early in the week.
(c) 082-555-4981 ✉ chairperson@epvcc.co.za ✉ savva@epvcc.co.za ✉ hall.hire@epvcc.co.za (c) 084-513-0939 ✉ chairperson.vice@epvcc.co.za ✉ events@epvcc.co.za Assisted by Liesl van Onselen (c) 083-656-9170 ✉ secretary@epvcc.co.za (c) 083-451-0100 ✉ treasurer@epvcc.co.za (c) 083-561-0038 ✉ membership@epvcc.co.za (c) 083-464-8587 ✉ events.alt@epvcc.co.za c) 072-030-8866 ✉ maintenance@epvcc.co.za <u>Non-Committee Members:</u> (c) 082-888-2551 ✉ info@epvcc.co.za (c) 072-313-1027 ✉ newsletter@epvcc.co.za (c) 082-555-4981 ✉ dating.officer@epvcc.co.za (c) 082-657-4115 ✉ savva.alt@epvcc.co.za ✉ communications@epvcc.co.za (c) 063-818-2416 ✉ devlin.faifer.2@gmail.com		Please note: The views expressed in this newsletter are those of the individual writers and are not necessarily the opinions of the editor, the Club, or its committee members. The acceptance of advertisers in the newsletter and on the website in no way implies and endorsement of the advertiser by the EPVCC or its Office Bearers. EPVCC Website: www.epvcc.co.za EPVCC Newsletter: http://www.epvcc.co.za/newsletters/ New SAVVA Website: www.savva.org.za
<u>Trustees – E.P.V.C.C. Property Trust</u>		Regalia:
Colin Skinner Len Whittal	Llewellyn Faifer Garth Todd	Car Badges: R 130.00 Rally Tables: R 50.00

40th Issue May & June 2021

Editorial	3
From the Chair	3
Subscriptions due	4
Facebook	4
Did You Know.....	5-6
FNB Car Insurance	6
Just for a laugh....	7
Congratulations	7
New Members	7
Condolences	8
SAVVA Technical Tip 167	8
What Can One Say!!	9
Random Photos from the Noggins	10
Autumn Trial	11
Rooted Takeaways	12
Classic ads: For sale / Wanted ...	13

Editorial

Hi folks

Another two months have flown by and another Newsletter to be done and sent out. As usual not much to write about. The Covid curve goes up and the Covid curve goes down. Lockdown levels go up and then they go down, seems to be the cycle of life nowadays. Hopefully once the bulk of the population has been vaccinated there will be a glimmer of light at the end of the tunnel and although I think life will never quite be the same for a long time it will be easier. We had our first jab on the 10th of June with barely any side effects except a toxic type of headache for a few days. Our next one is due about 22nd July, and I have never looked so forward to getting a needle shoved in my arm. The first jab was a breeze, hoping the second one is too. So now I can add the Covid vaccination to the long list of many vaccinations I have had in my lifetime namely smallpox, polio, yellow fever, hepatitis A & B, tetanus, etc.....and guess whatI'm still alive.

Subscriptions are due for payment from 1st July and there has been no increase for obvious reasons so please get your subs paid as soon as possible.

Stay safe out there.

Sue

From the Chair

Thanks to Cyril the club is closed for time being while the country is in level 4 lockdown. Anel is serving takeaways on a Friday evening from the club, so please support her. When we are able Friday nights are well supported with all covid protocols in place. It is great to see the club buzzing on a Friday night. Please remember to wear your mask when visiting the club.

The Autumn Trial was run on the 23rd of May and we had 8 entries. So great to see some old faces and quite a few new ones entering a time trial for the first time. How long has it been since you saw a moto9r cycle on a time trial? Thanks to Peter for entering your beautiful motorcycle. A great day was had by all and congratulations to the van Onselens on winning. It was great to see some awfully close final times.

Chris Hanekom has resigned from the committee, and we welcome Francois van Jaarsveld to the committee. I want to thank Chris for his service to the club, it was much appreciated.

Many of you may have noticed that I have not been at the club since the end of May, I landed in hospital on the 24th May and had to have emergency double bypass surgery. Thank you to all who called and sent get well wishes. They were all much appreciated as being in hospital in current times is not an enjoyable experience - no visitors allowed, no TV and cardio thoracic ICU is like prison. I am well on the way to recovery. Thanks once again to all.

Riaan's tour to Tsitsikamma has been postponed for a month also due to level 4 lockdown.

Someone has stolen the key to the outside toilet. We are in the process of replacing the lock. Please bear with us. An exterior key safe is being installed and the combination will be 1970. Please ensure that the tumblers are rotated and not showing 1970 after you have used the toilet.

We have club caps for sale at the club bar. They cost R 100.00. These can be bought from Devlin on a Friday night.

Please make a note of the date of the AGM. The AGM will be held on the 10th of October 2021. Please note that last year's AGM will be held first, followed by the 2021 AGM.

Stay safe and happy motoring.

Llew

IMPORTANT NOTICE – ANNUAL SUBSCRIPTIONS

PLEASE BE ADVISED THAT THE CLUB'S 2021/22 NEW FINANCIAL YEAR COMMENCED ON THE 1ST OF JULY 2021.

PAYMENTS TO BE MADE AS SOON AS POSSIBLE INTO THE FOLLOWING BANK ACCOUNT:-

BANK: NEDBANK

BRANCH CODE: 198765 (Greenacres)

ACCOUNT NUMBER: 1263074391

ACCOUNT NAME: EASTERN PROVINCE VETERAN CAR CLUB

THEIR or BENEFICIARY REFERENCE: **YOUR NAME (very important)**

SUBSCRIPTIONS FOR THE PERIOD 1ST JULY 2020 TO 30TH JUNE 2021 ARE AS FOLLOWS:-

TOWN MEMBERSHIP: R460.00 plus SPOUSE if applicable = R520.00

COUNTRY MEMBERSHIP: R330.00 plus SPOUSE if applicable = R390.00
(Must live beyond 50kms of Port Elizabeth)

SPOUSE OF MEMBER: R 60.00

JUNIOR MEMBERSHIP: R 90.00 plus SPOUSE if applicable = R150.00
(Under 30 years of age)

Member Applications forms are available on the website: www.epvcc.co.za



Find us on
Facebook

<http://www.facebook.com/pages/Eastern-Province-Veteran-Car-Club/296587683705528>

(Control and click to follow link)

Website: www.epvcc.co.za

Did You Know.....

..... that **New Zealand** was one of 20 countries around the world that built the legendary Beetle. The story starts in 1954 when Motor Holdings was awarded the Volkswagen franchise and began to import the Beetle and Transporter as fully assembled Completely Built Units (CBU) but mostly as Completely Knocked Down (CKD) kits with 40% local parts content, for assembly at the old Passenger Transport Company's bus depot in Otahuhu, a suburb of Auckland on New Zealand's North Island. The Transporter was made in three versions: Kombi/Microbus, Panel Van and Single Cab Pickup.

The company changed its name to VW Motors in 1955 and by 1958 had built a new assembly plant at Fort Richard Road, also in the Auckland district of Otahuhu.

Motor Holdings group assembled many different makes at the Otahuhu factory in addition to Volkswagen, including Studebaker, Nash and Hudson in the 1950s, Rambler and Peugeot in the early 1960s and then Datsun, Simca, Skoda and the Fiat 500. They also manufactured the Trekka - New Zealand's only home-grown vehicle - through the 1960s and 1970s.

Beetle production ended in New Zealand in 1972 with the 1302 model. Unfortunately, the cars had become uncompetitive in the market due to the strengthening of the German currency and competition from cheaper Japanese vehicles with more features.

VW Motors association with Volkswagen continued through the importing of CBU vehicles after this time and in 1975 the Mark 1 Golf began production at Otahuhu. The model met with limited success due to being overpriced and quality control problems.

There was a name change to European Motor Distributors in 1978 although the plant continued to assemble Volkswagens until 1986.

When tariffs were lifted on imported cars in 1998, vehicle sales dramatically increased, resulting in Volkswagen becoming the biggest selling European make in New Zealand (including UK brands) in 2003, a position it first held 50 years earlier with the oval-window Beetle and split-screen Transporter range.

The Otahuhu plant in Auckland built around 127,000 vehicles before it was sold to Mazda and its last vehicle, a Mazda utility, rolled from the line in 1987. The assembly halls and buildings have lain empty and silent ever since.

It's worth noting that the Beetle was the largest selling Volkswagen model in New Zealand during its production span from 1954 to 1972 and also the biggest selling non-British vehicle in New Zealand during the 1950s. At its peak, the Otahuhu plant manufactured 2,491 Volkswagens in 1966.

Enjoy the photos!





Source: Pete Frost – Volkswagen Factory Pictures



FNB
First National Bank
Insurance Brokers

**Specialising in Vintage and Veteran Car Insurance
together with Personal and Business Insurances.**

CONTACT DETAILS:

Gareth Bain

Telephone: 087 736 2222 • Fax: (011) 699 0783

Email: Gareth.Bain@fnb.co.za

Branch Manager: Mrs N Meier

An Authorised Financial Services Provider

Just for a laugh

A couple in their nineties are both having problems remembering things. During a check-up, the doctor tells them that they're physically okay, but they might want to start writing things down to help them remember.

Later that night, while watching TV, the old man gets up from his chair. 'Want anything while I'm in the kitchen?' he asks.

'Will you get me a bowl of ice cream?'

'Sure.'

'Don't you think you should write it down so you can remember it?' she asks.

'No, I can remember it.'

'Well, I'd like some strawberries on top, too. Maybe you should write it down, so as not to forget it?'

He says, 'I can remember that. You want a bowl of ice cream with strawberries.'

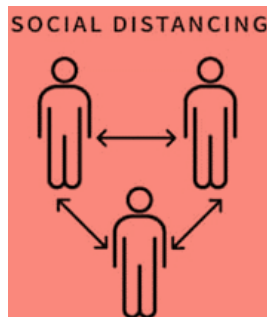
'I'd also like whipped cream. I'm certain you'll forget that, write it down?' she asks.

Irritated, he says, 'I don't need to write it down, I can remember it! Ice cream with strawberries and whipped cream - I got it, for goodness sake!'

Then he toddles into the kitchen. After about 20 minutes, the old man returns from the kitchen and hands his wife a plate of bacon and eggs. She stares at the plate for a moment.

'Where's my toast?'

Remember to always adhere to the Club's protocols!!!



CONGRATULATIONS

Congratulations to Liesl and Wiehan van Onselen on the arrival of their precious bundle, baby George, who made a rather unexpected early arrival last month. It must have been all the excitement of Mom & Dad winning the Autumn trial!!! May he bring you many hours of joy and pleasure.

NEW MEMBERS

We would like to wish a hearty welcome to the following new members of the club.

Kerry Burke

Ashley Snow

Andrew Meyer

CONDOLANCES

It is with sadness that we wish to inform you of the passing of Irma Acton, the wife of the late Bob Acton. She passed away peacefully at home. Our deepest condolences to her family and friends. RIP

We are also sorry to inform you that Des Friedemann who passed away in May. Our deepest condolences to his family and friends. RIP

SAVVA Technical Tip 167 – Welsh Plugs (core plugs)

Some months ago, we discussed overheating problems – the curse of older cars which was invariably caused by loose or broken fan belt, blocked radiator, or hose problems and the subsequent loss of water. Recently whilst assembling an old engine, I was reminded of another problem.

One of the most overlooked parts of water-cooled engines is the core or welch plugs. They must be the cheapest part of an engine to replace and the most overlooked but if they pack up unexpectedly, as they usually do, the result can be catastrophic to the engine.

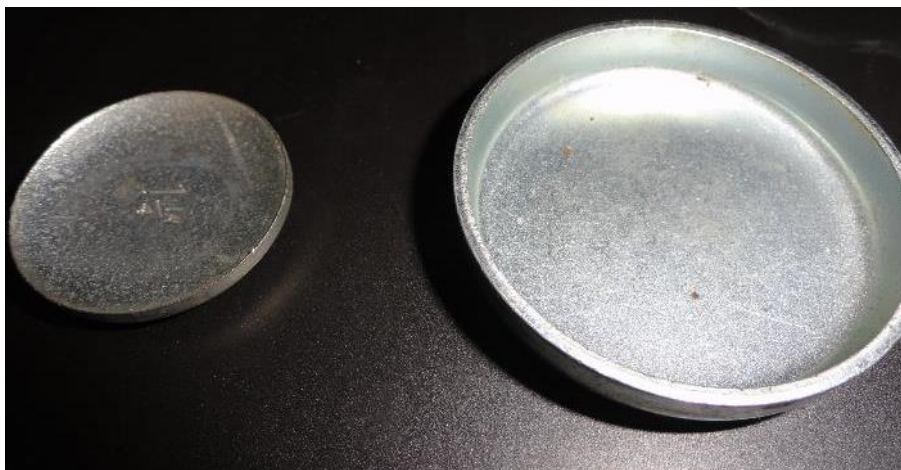
When last did you check the plugs on your engines? Unfortunately, some are situated under the carburettors and difficult to get to or in the bell housing which means removing the gearbox, clutch and fly wheel to get to it.

Modern cars have all kinds of goo in the water system which protects the alloy and aluminium components and also the core plugs to a certain degree. Over the years however, with the older cast iron engines, anything that resembled water went into the radiators resulting in the water pumps, hoses and core plugs having a terrible time trying to survive.

There are two types of plug, a cup and a saucer. The saucers, which were used on early engines, are becoming increasingly hard to find and if necessary, one has to revert to using the modern cup ones. In the past, in desperation, I've had to use cup plugs instead of saucer ones and ground most of the lip off until they were a tight fit and swathed them with good old Indian Head shellac and tapping them in. Once fitted they did the job.

Ideally, if you can, making or finding brass plugs is the answer. One wonders why vehicle manufacturers didn't fit brass as standard. Perhaps because it would add a few Rand to the cost of the vehicle which would be a tragedy for them. Incidentally, I recall seeing a mining tender for rebuilding engines and they stipulated brass core plugs – I wonder why????

The following pictures show the different plugs. The smaller being an old saucer and the larger a modern cup.



WHAT CAN ONE SAY!!!



Random Photos from the Friday Night Noggins

A really good selection of vehicles over the last two months at our weekly Noggins when the club was open. Unfortunately, now that we are back into Level 4, no more noggins for a while.



Autumn Trial – 23rd May 2021

Our first official trial of the year took place on a beautiful Sunday morning in May. The idea of the trial was to have fun and learn to understand how we do “Closed Odometer Rallies”.

All that was required for the trial was a clip board, stop-watch, clock, pencils and of course, the usual sense of humour. A good selection of cars (8) took part in the trial including a motorbike.

The trial distance was 97km plus another 30 km of travel to the start and at the end of the trial, back to the club for the usual Bring ‘n Braai.



*3rd Place: Amelia Buchner/
Fiona Burger. Passenger. Wendy
Rossouw*



2nd Place: Riaan Hanekom/ Brian Clark



1st Place: Wiehan and Liezl van Onselen

Rooted – Friday night take-aways

Anel will be doing takeaways only (no sit downs) on Friday nights while we are under Level 4.

The menu will be sent out by either Anel on her WhatsApp group or by Michael via email.

Contact Anel on 065-927-5660 to be added to the WhatsApp group.

Bulk options are available.

Rusks now available.

(Menu sample)

rooted.
WHERE GOOD FOOD BEGINS

Date :9 Juky 2021

Take Aways only
16:30 - 18:00
Cash / EFT only

**Bacon & Broccoli
Soup |R45**
served with homestyle
bread

**Chicken Pesto
Lasagne |R60**
add on a side salad
for only | R20

Cinnamon Milktart | R20



**EPVCC - CONYNGHAM RD- GLENDINNINGVALE
PORT ELIZABETH - SOUTH AFRICA**

PLACE ORDERS BY THURSDAY 2PM
TO SECURE YOUR ORDER:
WHATS APP ANEL - 065 927 5660



CLASSIC ADS :

FOR SALE & WANTED

FOR SALE

Archie Hitge (an EPVCC member) has the following cars and bakkies for sale.
Should you be interested in any of them you can phone him on **082-565-2864**



FOR SALE: A BEAUTIFULLY RESTORED MORGAN



The following work has been done:

New powder coated chassis / New shocks custom made by Monroe Shock absorbers P E. / Rear axle stripped and checked by David Henderson. (Ex M D Denneys Edwards PE.) / Gearbox also by Dave. / Cylinder Head fitted with new valves and valve guides by John Dirker engine rebuilders P E / New big end bearings fitted even though the old ones were still within spec. / New wind screen fitted / New cylinder liners and rings fitted / Water pump overhauled by Strydom Waterpumps PE. / New radial tyres fitted / All ash wood framing replaced / New aluminium doors fitted / Brakes overhauled / New leather upholstery by Leathertech PE. / All gauges restored by Speedy Cables UK Approved by Morgan UK. / New Mahogany dashboard / New rear-view mirrors / New modern bumpers / New SU fuel pump / SU carbs rebuilt by Jack Cramp. Ex SU factory UK. / Rewired by Cedric Longman, Cedrics electrical PE. / New hood currently being made by George Tyler PE. / Radiator rebuilt by Silverton Radiators PE. / New suspension rubbers / New kingpin bushes.....and much more.....

All old parts, including chassis are available. Road worthied and licensed. Some 1500 plus trouble free miles covered since overhaul. A great daily driver. Reason for selling – down-sizing garages.

Offers above R375K. If anyone is interested, please contact:

Mike Bellingham.

081-873-7832 / 041-776-1024 / R.Bellingham@dsgschool.com